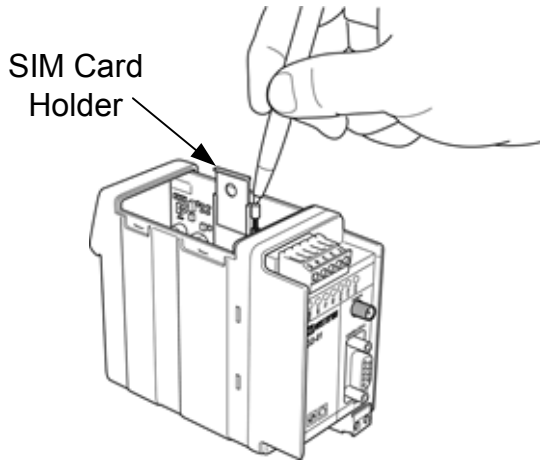




GD-01 to Omron PLC's

Web : www.westermo.co.uk
E-mail : technical@westermo.co.uk
Tel : +44 (0) 1489 580585
Fax : +44 (0) 1489 580586

GD-01 Details



Important

Please note that a SIM card and the Data Number are required for the GD-01 to receive a modem connections. Contact your network provider for the data number

Notes

Any of Omron's serial protocols i.e. SYSMAC WAY or TOOLBUS protocol can be used to communicate over a GSM link. Some Omron PLC's and in some cases the firmware revision do not support TOOLBUS.

Currently no GSM modems support the Omron default configuration of 9600,7,E,2. The most universally accepted data format is 9600,8,N,1 and this will be used as the default for this application sheet. Refer to page 2 for a detailed view of the changes required to the Host link port setup.

Modem Setup

Enter the following AT commands in the modem via HyperTerminal

AT+IPR=9600;+IFC=0,0;S0=1E0V0&D0&W

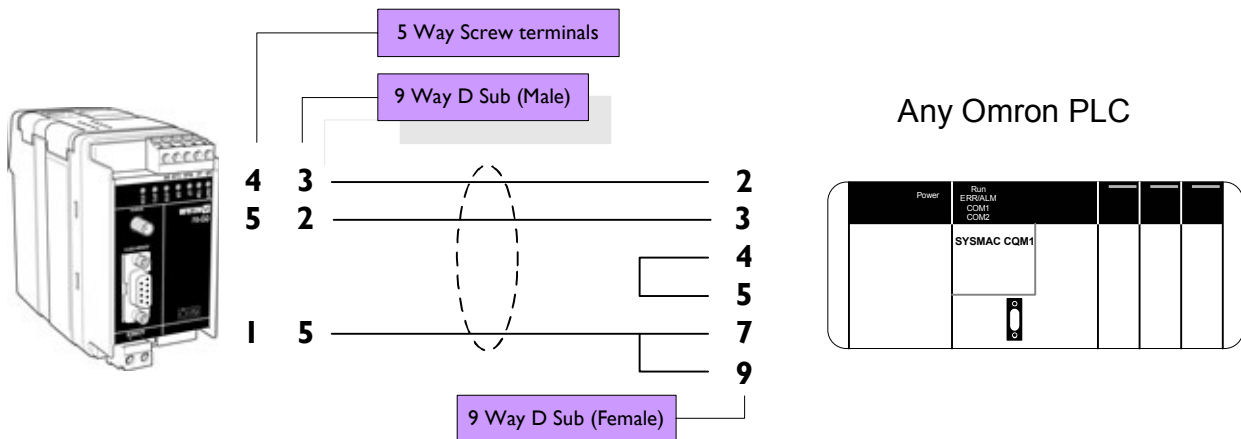
Compatibility

The GD-01 modem is compatible with all Westermo PSTN dial-up and ISDN modems. The data throughput via the GSM network is noticeable slower than a normal Dial-up connection.

SMS

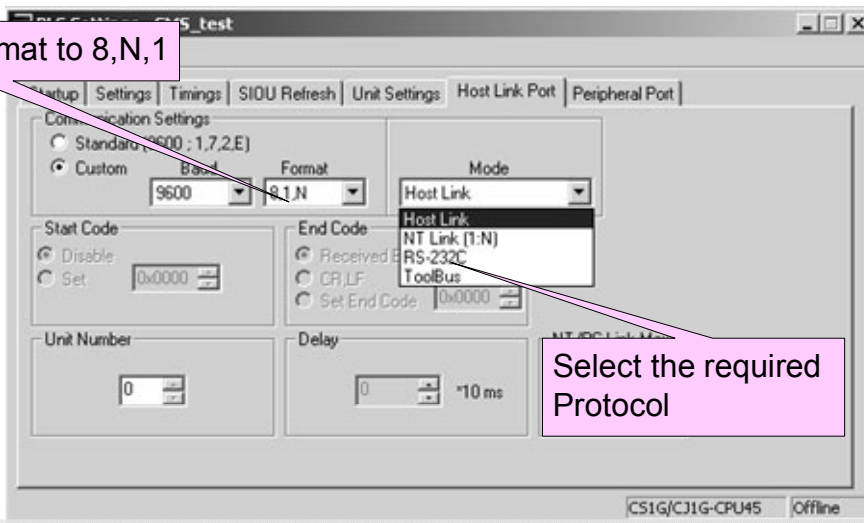
For setting up SMS messaging please ref to the Westermo For connectivity to Ethernet based system please refer to the Omron Ethernet application notes.

Connections



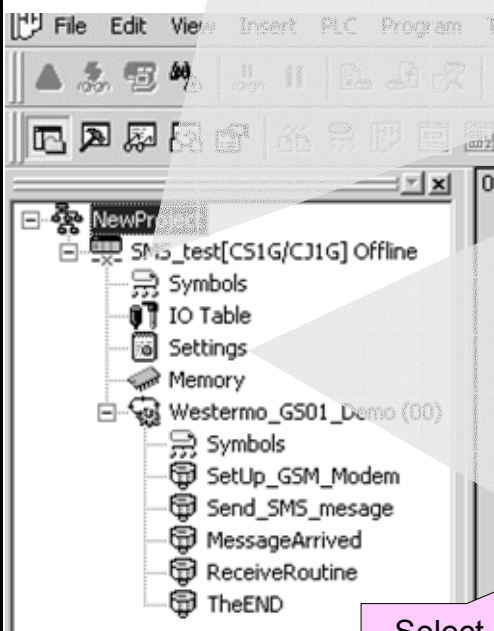
PLC Host Link Port Set-up

Change Format to 8,N,1

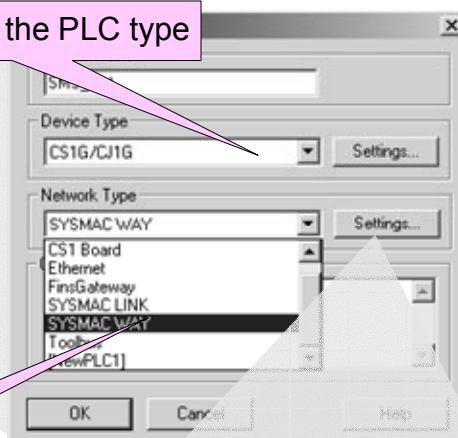


Select the required Protocol

PLC and Bus Selection



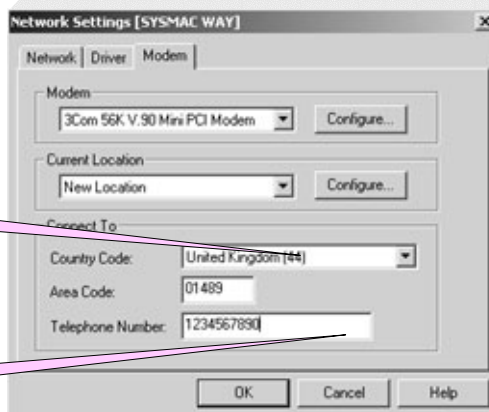
Select the PLC type



Select preferred bus type

Modem Driver Set-up

Ensure that the correct country code is entered



Enter the Data number for the SIM card in the GD-01