

Sensing Band (Polytetrafluoroethylene:PTFE)

F03-16PT

The F03-16PT(PTFE: Polytetrafluoroethylene) sensing band designed for K7L ensures higher chemical resistance compared to the F03-16PE(Polyethylene).

In combination with K7L, ensures to detect a liquid even if the sensing band is bent at places because both of the surfaces are available for sensor.

The core is not exposed even if the sensing band is bent at places, preventing malfunction due to the contact with sensing band and the places where is conductive.

The grooves on the sensing band allow to more easily lead the leaked liquid into them.



Ordering Information

Item	Model	Material
Sensing Band	F03-16PT	Sheath: PTFE(Polytetrafluoroethylene) Core: Stainless steel SUS316
Sensing Band Sticker	F03-26PTN	PFA(Perfluoroalkoxy resin)

Note:1. F03-16PT Sensing Bands are available in 1m, 2m, 5m, 10m, 15m, and 20m as standard lengths. For example, if a 3-m-long F03-16PT Sensing Band is required, place an order for F03-16PT 5M(5m in length). If you need a 12-m-long F03-16PT Sensing Band, place an order for F03-16PT 15M(15m in length).

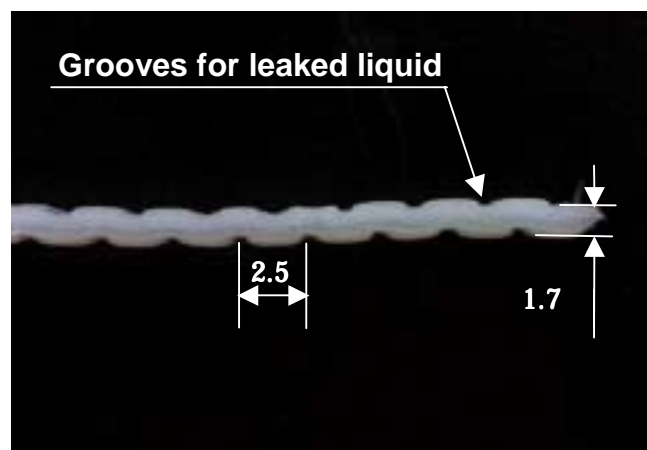
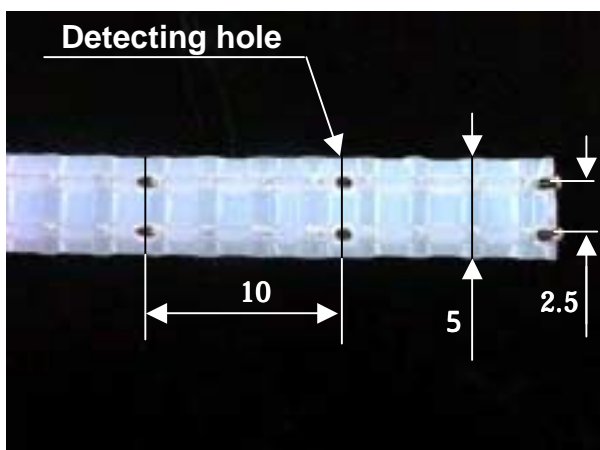
- The minimum order quantity of the F03-26PTN Sensing Band Sticker is one set (containing 10 pieces).
- For details, refer to K7L-AT50/-AT50D Liquid Leakage Sensor Amplifier(Cat. No. F049-E1-3).

Specifications

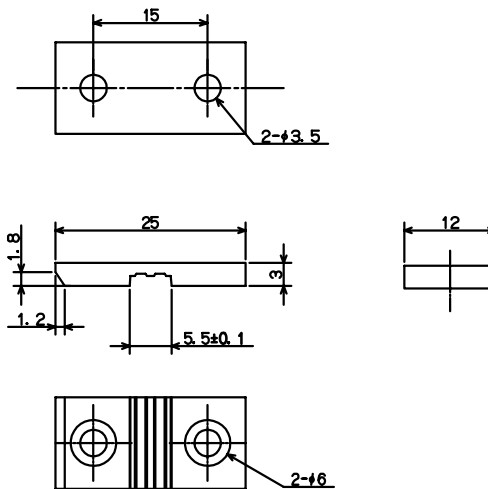
Sheath	PTFE(Polytetrafluoroethylene)
Core	Stainless steel SUS316
Ambient operating temperature	-50 to 200
Applications	For detecting both acidic and alkaline liquids
Weight	Approx. 16g (1m)

Appearance & Dimensions

F03-16PT



F03-26PTN



Operation

Chemical Resistivity for the Sensing Band

Consider the effect of the atmosphere of the environment and the solution to be detected on the Sensing Band before use, in order to prevent secondary fire damage.

Material	F03-16PE		F03-16PT	
	Sheath	Core	Sheath	Core
	Polyethylene	SUS316	PTFE*	SUS316
Water	A	A	A	A
Acetone	C	A	A	A
Ammonia	A	A	A	A
Ethanol	B	A	A	A
Hydrochloric acid	A	C	A	C
Hydrogen peroxide solution	A	A	A	A
Xylene	B	A	A	A
Cyclohexane	C	--	A	--
Trichloroethylene	C	A	A	A
Toluene	C	B	B	B
Phenol	B	A	B	A
Butanol	B	--	A	--
Fluorine	A	C	A	C
Hexane	C	--	A	--
Benzene	C	A	A	A
Methanol	B	A	A	A
Sulfuric acid	C	B	A	B
Phosphoric acid	A	B	B	B

PTFE* = Polytetrafluoroethylene

Note:

A: Not effected at all or only very slightly affected.

B: Slightly effected but, depending on the conditions, sufficient for use.

C: Affected but may still be used. **After the leakage is detected, replace with the new sensing band immediately (even the either of sheath or core is not affected yet or slightly effected.)**