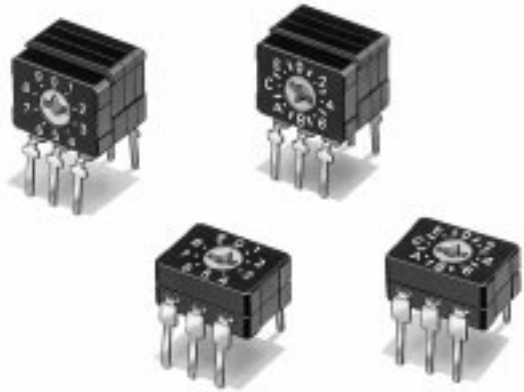


## DIP Switch (Rotary Type)

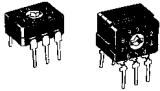
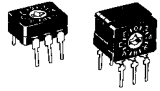
A6C/A6CV

### Internally sealed DIL-IC type rotary DIP switch

- Precision rotary cam and contact mechanisms provide high reliability.
- Insert-molded terminals and O-ring sealed rotor make sealing with tape unnecessary.
- Offset between terminal pins and side of case allows simple circuit inspection.



### Ordering Information

No. of positions	10	16
	Binary-coded decimal code	Binary-coded hexadecimal code
Output code		
Type		
Top actuated	A6C-10R (N)	A6C-16R (N)
Side actuated	A6CV-10R	A6CV-16R

### Specifications

#### ■ Ratings/Characteristics

Switching capacity	1 to 100 mA, 5 to 30 VDC
Min. permissible load	10 $\mu$ A, 3.5 VDC
Carry current	100 mA
Contact resistance	200 m $\Omega$ max.
Insulation resistance	10 M $\Omega$ min. (at 250 VDC)
Dielectric strength	250 VAC for 1 minute (between terminals of same pole)
Operating torque	0.98 N max. {100 gf}
Vibration resistance	Malfunction durability: 10 to 55 Hz, 1.5 mm total amplitude
Shock resistance	Malfunction durability: Approx. 300 m/s <sup>2</sup>
Ambient temperature	Operating: -20 to 70°C (no icing)
Humidity	35 to 95%
Life expectancy	Mechanical: 10,000 operations min. Electrical: 2,000 operations min.
Weight	A6C-10R (N), -16R (N): approx. 0.4 g A6CV-10R, -16R: approx. 0.9 g

Binary-coded Decimal Code

Type		A6C□-10R (N)			
Terminal No.		1	2	4	8
0					
1		●			
2			●		
3		●	●		
4				●	
5		●		●	
6			●	●	
7		●	●	●	
8					●
9		●			●

Binary-coded Hexadecimal Code

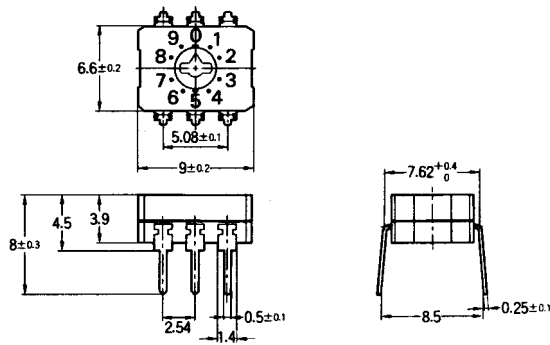
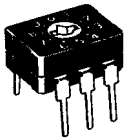
Type		A6C□-16R (N)			
Terminal No.		1	2	4	8
0					
1		●			
2			●		
3		●	●		
4				●	
5		●		●	
6			●	●	
7		●	●	●	
8					●
9		●			●
A			●		●
B		●	●		●
C				●	●
D		●		●	●
E			●	●	●
F		●	●	●	●

Note: "●" in the above tables shows the output terminal No. that has continuity with the common terminal (C).

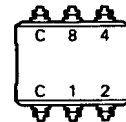
Dimensions

Note: All units are in millimeters unless otherwise indicated.

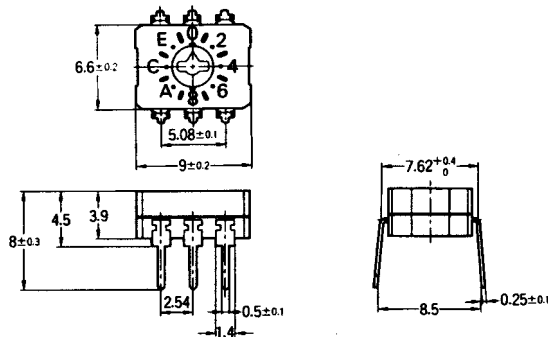
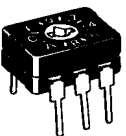
Top Actuated, 10 Positions  
A6C-10R (N)



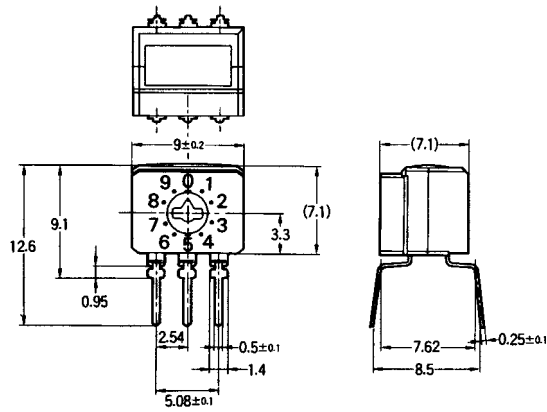
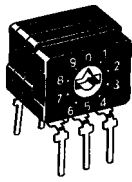
Terminal arrangement (top view)



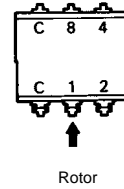
Top Actuated, 16 Positions  
A6C-16R (N)



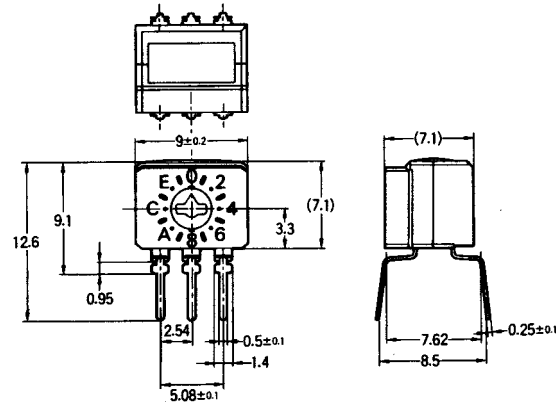
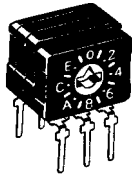
**Side Actuated, 10 Positions  
A6CV-10R**



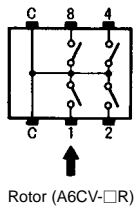
Terminal arrangement (top view)



**Side Actuated, 16 Positions  
A6CV-16R**

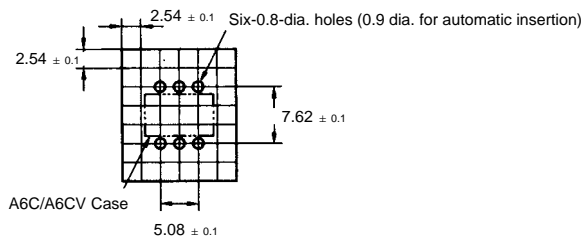


Internal connections (top view)



Rotor (A6CV-□R)

Mounting holes (top view)



**ALL DIMENSIONS SHOWN ARE IN MILLIMETERS.**  
To convert millimeters into inches, multiply by 0.03937. To convert grams into ounces, multiply by 0.03527.