

**CX-Server OPC  
User Manual  
Getting Started  
Version 1.0**

## ***Notice***

OMRON products are manufactured for use according to proper procedures by a qualified operator and only for the purposes described in this manual.

The following conventions are used to indicate and classify precautions in this manual. Always heed the information provided in them. Failure to heed precautions can result in injury to people or damage to the product.

<b>DANGER!</b>	Indicates information that, if not heeded, is likely to result in loss of life or serious injury.
<b>WARNING</b>	Indicates information that, if not heeded, could possibly result in loss of life or serious injury.
<b>Caution</b>	Indicates information that, if not heeded, could result in relatively serious or minor injury, damage to the product, or faulty operation.

## ***OMRON Product References***

All OMRON products are capitalised in this manual. The word “Unit” is also capitalised when it refers to an OMRON product, regardless of whether or not it appears in the proper name of the product.

The abbreviation “PLC” means Programmable Logic Controller and is not used as an abbreviation for anything else.

## Visual Aids

The following headings appear in the left column of the manual to help you locate different types of information.

**Note:** Indicates information of particular interest for efficient and convenient operation of the product.

**1, 2, 3...** Indicates lists of one sort or another, such as procedures, checklists etc.



Represents a shortcut on the Toolbar to one of the options available on the menu of the same window.



Indicates a program must be started, usually by clicking the appropriate option under the standard Windows 'Start' button.

**Note:** Indicates procedures that are specific to Visual Basic.



© OMRON, 2000

All rights reserved. No part of this publication may be reproduced, stored in a retrieval system, or transmitted, in any form, or by any means, mechanical, electronic, photocopying, recording, or otherwise, without the prior written permission of OMRON.

All copyright and trademarks acknowledged.

No patent liability is assumed with respect to the use of the information contained herein. Moreover, because OMRON is constantly striving to improve its high-quality products, the information contained in this manual is subject to change without notice. Every precaution has been taken in the preparation of this manual. Nevertheless, OMRON assumes no responsibility for errors or omissions. Neither is any liability assumed for damages resulting from the use of the information contained in this publication.

## *About this Manual*

This manual describes the CX-Server OPC application and its ability to interface with OMRON CS, CV and C PLCs. It does not provide detailed information concerning the PLCs themselves, for this information the commercial manual for the device must be consulted.

This manual contains the following information:

- **Getting Started with CX-Server OPC:** This describes the CX-Server OPC software in general terms.
- **Using the OPC Server:** This describes running and setting up the OPC Server for use by any OPC Client.
- **Using Omron OPC Client Components:** This describes using the supplied ActiveX components to access PLC data and includes a tutorial for Excel and Visual Basic host applications.
- **Appendix A Component Properties:** This appendix summarises the available properties for the ActiveX objects.
- **Appendix B Script Interface:** The Visual Basic script interface for the OPC Server communications control.

A **Glossary of Terms** and **Index** are also provided.

<b>Warning:</b>	Failure to read and understand the information provided in this manual may result in personal injury or death, damage to the product, or product failure. Please read each chapter in its entirety and be sure you understand the information provided in the chapter and related chapters before attempting any of the procedures or operations given.
-----------------	---

## Table of Contents

CX-Server OPC	Page
<b><u>Getting Started with CX-Server OPC</u></b> .....	<b>6</b>
<a href="#">About this Manual</a> .....	6
<a href="#">System Requirements</a> .....	7
<a href="#">Installing CX-Server Lite</a> .....	8
<a href="#">The Help System, and How to Access it</a> .....	8
<a href="#">Technical Support</a> .....	9
<b><u>Using the OPC Server</u></b> .....	<b>10</b>
<a href="#">What is OPC?</a> .....	10
<a href="#">Starting CX OPC Server</a> .....	10
<a href="#">Using with Third Party OPC Clients</a> .....	11
<a href="#">Configuring the PC for remote connection</a> .....	12
<b><u>Using the OPC Client Components</u></b> .....	<b>14</b>
<a href="#">Objects Overview</a> .....	14
<a href="#">Using the OPC Server</a> .....	15
<a href="#">Step 1: Viewing PLC data using Omron Graphical Controls</a> .....	15
<a href="#">Step 2: Inserting PLC data in Cells</a> .....	18
<a href="#">Step 3: Adding Third Party Controls</a> .....	18
<a href="#">Other Features</a> .....	19
<b><u>Appendix A – Component Properties</u></b> .....	<b>23</b>
<b><u>Appendix B – Script Interface</u></b> .....	<b>26</b>
<a href="#">Functions</a> .....	26
<b><u>Glossary of Terms</u></b> .....	<b>29</b>
<b><u>Index</u></b> .....	<b>31</b>

## Getting Started with CX-Server OPC

This book introduces the CX-Server OPC application to a new user.

CX-Server OPC allows PLC data collected by CX-Server to be accessed by standard OPC clients. It allows existing process data to be collected and analysed, plus it includes graphical components allowing easy creation of simple SCADA applications.

Included with CX-Server OPC is the CX-Server Runtime, plus a range of ActiveX components that can be dragged and dropped onto your Excel Workbook or Visual Basic Form.

### About this Manual

This manual helps a new user get started with CX-Server OPC, by describing the software installation and computer configuration, and by leading the user through the basics of CX-Server OPC.

Separate OMRON manuals describe the related products; CX-Server, CX-Programmer and SYSMAC-SCS.

Small example applications are included to demonstrate the basic features of the product. These can be used to help with product familiarity.

CX-Server OPC comes with a comprehensive on-line help system, which is designed to complement this manual, and provide a quick reference at any point in the CX-Server OPC application when the manual is not to hand. This general help system uses a fast 'hypertext' system that allows progressively more information to be obtained about any topic by selecting keywords within the descriptive text.

Throughout this manual, it is assumed that a working knowledge of Microsoft Windows is obtained, and that the user can:

- ◆ Use the keyboard and mouse.
- ◆ Select options from Windows menus.
- ◆ Operate dialog boxes.
- ◆ Locate, open and save data files.
- ◆ Edit, cut and paste text.
- ◆ Drag and drop.
- ◆ Use standard Help systems including Index and Find features.
- ◆ Start programs from the "START" button.

If Windows has not been used before, it is recommended that some time working with the Microsoft documentation is spent before using CX-Server OPC.

This introductory section deals with several important aspects of installing CX-Server OPC and setting it up for use. It is recommended that this entire section be read before installing the software.

## System Requirements

CX-Server OPC operates on IBM compatible personal computers with 200 MHz Pentium central processor. It is designed to run in the Microsoft Windows 95 / 98 and Windows NT V4.0 environment.

**Note:** CX-Server OPC is not guaranteed to be compatible with computers running Windows emulation (e.g. Apple Macintosh).

## Hardware Requirements

The following configuration is the **minimum** system requirements for running CX-Server OPC

IBM PC compatible 200 MHz Pentium processor:

- ◆ 64 Mbytes of RAM,
- ◆ 30 Mbytes available hard disk space,
- ◆ 800 x 600 Super VGA display.

The **Recommended** minimum is:

- ◆ IBM PC compatible 400 MHz Pentium II processor,
- ◆ 64 Mbytes of RAM,
- ◆ 50 Mbytes available hard disk space,
- ◆ 1024 x 768 Super VGA display.

## Operating Systems and Environments

The operating systems on which this software will run are:

- ◆ Microsoft Windows 95 / 98,
- ◆ Microsoft Windows NT 4.0 (Service Pack 4 and later),

Containers in which this software will run are:

- ◆ Microsoft Excel 97 and later,
- ◆ Microsoft Visual Basic version 5.0 and later.

## Interfaces to Hardware - PLC Communications

Interfaces to PLC hardware are via the CX-Server runtime system. Note that Temperature Controllers are not supported in this version.

Interfaces to Network Service Boards (NSBs) are achieved using Fins Gateway, which is supplied and supported as part of the CX-Server product.

## Interfaces to Hardware - Peripherals

Interfaces to PC hardware (printers, graphics, keyboard, mouse, Ethernet etc) are supported by drivers installed and supported by Windows.

## Installing/Uninstalling CX-Server OPC

The CX-Server OPC software is supplied on CD-ROM and is installed easily from within Windows.

### To install CX-Server OPC

- 1, 2, 3...**
1. Close all programs.
  2. Insert the CD labelled **CX-Server OPC** into your CD-ROM drive. If Autorun is enabled on your system, the installation starts automatically, otherwise see the README.TXT on the CD-ROM for instructions to launch manually
  3. Follow the instructions on the screen.

By default, CX-Server OPC is installed in **C:\Program Files\Omron**. Additional Omron applications will be installed in a subfolder under Omron. Common components are installed into **C:\Program Files\Common Files\Omron\Components**

### To uninstall CX-Server OPC

When you uninstall, your CX-Server OPC project data remains intact – uninstall only removes program files. It is recommended, however, that you copy and move any projects you saved in the CX-Server OPC folder. Save a copy of your projects in another location on your hard drive (such as your My Documents folder) before uninstalling CX-Server OPC.

- 1, 2, 3...**
1. From the **Start** menu, select **Settings – Control Panel**.
  2. Double-click the **Add/Remove Programs**.
  3. Click the **Install/Uninstall** tab.
  4. From the list programs that you can remove, select **CX-Server OPC**.
  5. **Click Add/Remove**.
  6. At the prompt, select the **Remove** item and click **Next** and follow any further prompts
  7. Wait until the uninstall program indicates that the process is complete.

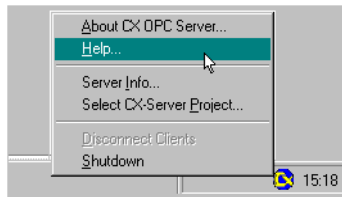
## The Help system, and How to Access it

CX-Server OPC comes with a detailed help system. At any time while using the software, it is possible to get help on a particular point that is currently being worked on, or on general aspects of CX-Server OPC. This system is intended to complement the manual, by providing on-line reference to specific functions of the software and how to use them. The manual is designed to provide tutorial information and discuss the various facilities offered by CX-Server OPC.



## Help Topics

The help can be launched in several ways. The Contents page can be launched by selecting **Help** from the **CX-Server OPC** folder on the Start button. Alternatively, if the server is running right click the CX logo in the system tray and select **Help...** from the menu.



The help system provides a standard look-up dialog under the Contents tab showing the contents of the CX-Server OPC Help file. Double-click on an item to read the associated information.

Refer to *Microsoft Windows* documentation for further information on using the Index and Find features.

## About CX-Server OPC

The OPC Server menu includes an About dialog contains essential version number information and includes details of the version of CX-Server installed that are required for obtaining technical support. The CX-Server ActiveX Components also include an About dialog containing essential version number information, which is accessible from their properties menu.

In addition, a brief description of CX-Server OPC and the CX-Automation Suite can be accessed from the main help contents dialog.

## Technical Support

If the installation instructions for this application have been followed, no difficulties should be encountered.

If a problem occurs, check that it does not relate to a fault outside CX-Server OPC, for instance, with external components. Check the following:

- ◆ The PC is working correctly,
- ◆ The external system or application is working correctly,
- ◆ The communications system is set up correctly,
- ◆ Any errors are cleared in the associated PLCs.

When Customer Services need to be contacted, keep the following details to hand. A clear and concise description of the problem is required, together with the exact text of any error messages.

**Note:** Use the About dialog to obtain the version number of the application.

## Using the OPC Server

This section introduces the OPC Server application to a new user.

### What is OPC?

**OPC** stands for **O**LE for **P**rocess **C**ontrol, and is a standard published by the OPC Foundation. The basic aim of the OPC standard is to allow hardware vendors to produce software drivers (called OPC Servers) and for software vendors to produce applications (called OPC Clients) which use a standard method for data interchange. This allows software and hardware from different vendors to be used together.

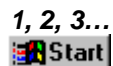
The latest version of the OPC standard is version 2. This replaces the earlier version 1 standard.

CX-Server OPC provides an OPC version 2 server by adding an OPC version 2 interface to the CX-Server runtime used for communication to Omron PLCs. Note that the OPC version 1 interface has been superseded, and is not supported.

Users of CX-Server OPC, who have existing OPC clients or intend to use the OPC client functionality included may need some basic understanding of OPC. OPC client developers will need a complete understanding of OPC, and the interfaces defined. For more information on OPC, see the OPC Foundation web site at [www.opcfoundation.org](http://www.opcfoundation.org).

### Starting CX OPC Server

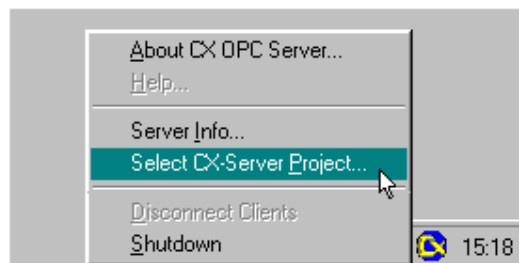
To launch the OPC Server:



1. From the Start button, select **OPC Server** from the section **Programs, Omron, CX-Server OPC**.
2. The server will start. Note the CX logo in the system tray:



3. Configure the server namespace by clicking the CX logo with the right mouse button and selecting **Select CX-Server Project** from the popup menu.



i. **To open an existing CX-Server Project (.CDM) file:**

- ◆ Click the **Open...** button and in the Open Project dialog navigate to the file you wish to open.
- ◆ When you click the **Open** button, the full path name of the selected file will be entered into the Project field.

**Caution:** When sharing a CDM file with other applications it is important to realise that any changes that are made to the CDM file may affect the other applications.

ii. **To create a new CX-Server Project (.CDM) file:**

- ◆ Click the **New...** button and in the Create Project dialog navigate to the directory in which you wish to create the new file.
- ◆ In the File Name field, enter the new file name. When you click the **Save** button, the full path name of the new file will be entered into the Project field.

Click the **OK** button.

4. Projects can be edited by clicking the **Edit Project...** button and then making the required changes from the Project Editor Dialog. This is a CX-Server runtime utility – invoke help from within it for details of how to add and configure PLCs and Points.
5. Click the **OK** button to complete the configuration.


The OPC Server is now ready for use by any OPC Client that is compliant with OPC Data Access version 2.

The CX-Server project file cannot be changed while clients are connected. To select a different CX-Server project file at a later date, either start the OPC Server manually from the Start button or if the server is running, select **Disconnect Clients** and then follow steps 3-5 of the above procedure.

**Tip:** You can make the OPC Server start automatically when the PC starts, by copying the shortcut on the Start button in the **CX-Server OPC** folder to the **Startup** folder.

## Using with Third Party OPC Clients

The exact procedure for connecting Third Party OPC Clients to the OPC Server will depend on the client being used. Consult your OPC Client documentation for full details. However, the following is a basic overview:

- 1, 2, 3... 1. Start and configure the OPC Server as described above.
-  2. Start the OPC Client.

3. Depending on the client, either browse for local OPC servers and select **OMRON.OpenDataServer.1** or type the name directly.  
Note: If the client supports browsing for servers, but the server is not shown, the client may not be fully OPC version 2 compliant.
4. Create an OPC Group from the client.
5. Create an OPC Item from the client. If the client supports OPC item browsing facilities, browse the OPC Server to list the namespace groups and items to create the OPC Item ID. Otherwise, type the CX-Server logical name as the OPC Item ID.

## Configuring the PC for remote connection

The OPC interface uses a Microsoft technology called DCOM. This allows the OPC client and OPC server to be seamlessly 'Distributed' over a PC network. The OPC Server should be running on the PC with direct connection to the PLC or PLC network. However, the OPC Client, or indeed multiple OPC Clients, can be run on different networked PCs and will automatically read and write data over the PC network. To do this, the PC running the OPC Server must be correctly configured. For full details of DCOM configuration and security issues see your Microsoft documentation. The following is a quick guide:

### Configuring a machine running Windows NT

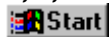
1, 2, 3...



1. Start DCOMCNFG.EXE e.g. by selecting **RUN** from the Start button. The default location is C:\WINDOWS\SYSTEM.
2. View the **Default Properties** tab. Ensure that the **Enable Distributed COM on this computer** is checked.
3. From the **Default Properties** tab, configure the **Default Authentication Level** to **Connect** and the **Default Impersonation Level** to **Identify**. Setup the access permissions by either:
  - a) On the **Default Security** tab, adding the user to the Access, Launch and Configuration lists by clicking the **Edit Default...** button in each case.
  - b) From the **Applications** tab, configure the properties for **OpenDataServer** and **OpcEnum**. On the **Security** tab, add the required users to each of the **Custom Permissions**.

### Configuring a machine running Windows 98 or Windows 95

1, 2, 3...



1. Ensure **File and Printer sharing** is enabled by selecting Network from the Control Panel. Add a service and click either "File and print sharing for Microsoft Networks" or "File and print sharing for Netware Networks" as appropriate.
2. Start DCOMCNFG.EXE e.g. by selecting **RUN** from the Start button. The default location is C:\WINDOWS\SYSTEM.

3. View the **Default Properties** tab. Ensure that the **Enable Distributed COM on this computer** is checked.
4. View the **Default Security** tab and check the **Enable remote connection** check box.
5. From the **Default Properties** tab, configure the **Default Authentication Level** to **Connect** and the **Default Impersonation Level** to **Identify**. Setup the access permissions by either:
  - a) On the **Default Security** tab, adding the user to the Access list by clicking the **Edit Default...** button.
  - b) From the **Applications** tab, configure the properties for **OPC Server** and **OPC ServerList Class**. On the **Security** tab, add the required users to each of the **Custom Permissions**.

Third party servers and clients running on Windows 95 or Windows 98, also require the **Microsoft Remote Registry** network service to be installed with the operating system and correctly configured on both the server and client machine. To check: start the Control Panel and view the Network settings. In the list of network components, look for **Microsoft Remote Registry**. If it does not exist, follow these steps to add it.

- 1, 2, 3...
  1. In the Network settings, ensure **User-level access control** is selected on the **Access Control** tab.
  2. From the **Configuration** tab, click **Add** to add a Network component. Choose **Service** from the type list and click **Add**.
  3. Click **Have Disk...** and browse your Windows CD. Select the path **\Tools\ResKit\NetAdmin\RemotReg** and select **regsvr.inf**.
  4. Follow screen prompts to complete installation and reboot if necessary.
  5. On the server machine, select **Passwords** from the Control Panel.
  6. Ensure the **Enable remote administration of this server** option is checked.
  7. Add all required user ids to the Administrators list by clicking **Add...**

## Using the OPC Client Components

CX-Server OPC also includes an OPC Client, called **Omron OPC Communications Component** and graphical controls that link directly to the communications component. These are all ActiveX controls allowing data to easily be collected and displayed in either Excel or Visual Basic. The graphical controls and communication component can of course be used with any version 2 OPC Server.

### Objects Overview

#### **OPC Communications Control**

This control provides a seamless interface between the CX-Server OPC host application (Excel, Visual Basic) and any version 2 compliant OPC Server. Note that the control is only visible when the host application is in the Design mode.

#### **7 Segment**

The 7 segment displays a numerical value in Binary, Decimal or Hexadecimal formats. Leading zeros and unused segments hidden. The colour of the segments and the display background can be set independently. The 7 Segment can not be used to set a value.

#### **Display**

The Display displays an analogue or text value. The Display only displays a value i.e. you can not set a value using this display.

#### **LED Indicator**

The LED functions as a coloured on/off indicator. The colour of the indicator and the display background can be set independently while its shape can be round or square. In the off state, the chosen indicator colour is dimmed.

#### **Linear Gauge**

The Linear Gauge displays an analogue value by filling a rectangle to represent the actual value as a proportion of its expected maximum. The rectangle can be filled from bottom to top (like a thermometer) or from left to right (like a progress complete bar). There is also a configurable scale, enabling intermediate values to be estimated. The Linear gauge will only display a value, you can not set a value with this gauge.

#### **Rotational Gauge**

The Rotational Gauge displays an analogue value, similar to a speedometer. An indicator needle rotates according to the value. There is a configurable scale, enabling intermediate values to be estimated. The Rotational gauge will only displays a value, you can not set a value with this gauge.

**Rotary Knob**

The Rotary Knob allows the you to set an analogue value, similar to a volume knob. You can rotate the knob, e.g. by clicking and dragging the mouse, to set the pointer to a new position. There is a configurable scale, enabling intermediate values to be estimated. The pointer always reflects the current value e.g. on start-up, and will change position in response to an external influence.

**Toggle**

The Toggle allows you to toggle a Boolean bit between its 'On' and 'Off' state. This is as a switch that can be clicked to change its state. The current state is shown by the position of the switch. The switch position also reflects the current value e.g. on start-up, and will change position in response to an external influence.

**Timer**

The timer enables you to run a set of instructions repeatedly at regular intervals.

**Using the OPC Server**

The following sections take you through the steps required to open your selected application, i.e. Excel or Visual Basic and create a working area. Using the short tutorial you can then continue and load a number of ActiveX objects, link them together and run a simulation.

As you became more practised in using CX-Server OPC you will find there is usually more than one way to perform an operation. The following procedures may not always the quickest but have been written to show how the application works using the basic features.

If the ActiveX objects are not visible in the Visual Basic Toolbox they can be added as follows:

- 1, 2, 3...** 1. Right click in the Toolbox and select the **Components...** option. This will open the Components dialog.
2. Find the CX-Server OPC controls in the list, all of which all start with **OMRON CX**, and tick each box.
3. Click the **OK** button. The objects are now displayed in the Toolbox.

**Step 1: Viewing Data using Omron Graphical Controls****Adding the Communications Control**

Before the Graphical Controls objects of CX-Server OPC can communicate with an OPC Server, the correct data source connections have to be set up for it. This is not necessary if the Graphical Control will be used stand alone and driven from script.

To add a Communications Control:

1, 2, 3...



1. Start the host application e.g. Microsoft Excel 97.  
**Tip:** If you intend having a large number of components on your desktop it is recommended you run Excel in full screen mode.
2. Ensure the **Control Toolbox** and **CX-Server OPC** toolbars are shown by selecting them from the **View, Toolbar** menu.

**Note:** In Visual Basic, ensure the **Toolbox** is shown by selecting **Toolbox** from the **View** menu.



3. Ensure the host application is in design mode for example, in Excel by clicking the Design Mode button in the **Control Toolbox**.



4. In the **CX-Server OPC** toolbar click the **Add OPC Communications Control** button. The Communications Control object is drawn in the default position - top left hand corner of the work area.

**Note:** In Visual Basic, select the required component from the **Toolbox** and draw a rectangle at the desired position.



**Tip:** Double clicking the toolbox button inserts the component with a default size.

5. Using Drag and Drop the object can now be repositioned in the work area. Note that the object will not be visible in run mode.

## Connecting the Communications Control to an OPC Server

The first step is to create a project file (.OPC file) or select one which has been previously created. This file contains configuration data and symbolic definitions for the desired OPC items

The following procedure takes you through the steps required to load an existing .OPC file or create a new one.

1, 2, 3...



1. Right click on the OPC communications control. In the popup menu, select the **OMRON CX OPC Communications Control Object** option.

**Note:** In Visual Basic, the menu option is called **Properties**.



2. In the Communication Control Properties dialog select the Project file:

i. **To open an existing project (.OPC) file:**

- ◆ Click the **Open...** button and in the Open Project dialog navigate to the file you wish to open.
- ◆ When you click the **Open** button, the full path name of the selected file will be entered into the Project field.



- ii. **To create a new project (.OPC) file:**
  - ◆ Click the **New...** button and in the Create Project dialog navigate to the directory in which you wish to create the new file.
  - ◆ In the File Name field, enter the desired file name. When you click the **Save** button, the full path name of the new file will be entered into the Project field.
3. By default, the Computer Name field shows the name of the local computer. If the OPC Server is on a remote machine, click **Show All**. This may take a few moments, depending on your network and operating system. When complete the Computer Name list now shows all computer names. Select the required computer, and wait while connection is tested.
4. The Server name list shows all the OPC version 2 compliant servers registered on the computer listed in Computer Name field. For the server included with CX-Server OPC select **Omron.OpenDataServer.1** from the list. The connection can be tested by clicking the **Info...** button that will display standard OPC status information collected from the OPC server.
5. At least one OPC client Groups must now be defined using the **Groups** tab. Choose any meaningful name.
6. Add an Item for the data to display using the **Items** tab. Choose any meaningful name e.g. OPCBoilerTemp. Type the Item ID of the item as defined by the OPC Server or use the **Browse...** button if the server supports the optional 'Browse items' interface. For the server included with CX-Server OPC the Item ID is same as the CX-Server Point Name e.g. "BoilerTemp".
7. Click the **OK** button to complete the configuration.

The communications control is now ready to connect to the OPC Server, and retrieve data. This data can be accessed using script commands (see Appendix B), or by adding a Graphical Component.

## Adding a 7 Segment Display

1, 2, 3...



1. With the host application in design mode, add a 7 Segment control.

2. Right click on the graphical component and from the popup menu select the **OMRON CX 7 Segment Control Object** option.

**Note:** In Visual Basic, the menu option is called **Properties**.





3. In the component properties dialog select the **Data Source** tab and enter the following information:

- ◆ **Server:** - Select the name of the communications control to be used. If only one has been added, it is selected automatically. If the list is empty then you need to add one first.
  - ◆ **Group:** - Select the required group. If the appropriate group is not in the list click the > button and select **Add Group....**
  - ◆ **Item:** - Select the point Item. If the appropriate Item is not in the list click the > button and select **Add Item....**
4. Click **OK** to complete the connection.

## Running the Application



Click the Mode button to change to 'Run' mode. The communications control will disappear and will connect to the server. Once connected, the 7 Segment display will show the current value.

**Note:** In Visual Basic, click  to switch to run mode, and  to return to design mode.




## Step 2: Inserting Data in Cells

Step 1 shows data in a graphical control, but the data can also be inserted directly into cells within Excel. This could be useful for further numerical analysis, like averaging or statistical control.

**Note** In Visual Basic, there is no concept of cells, but the same technique could be used to set a Visual Basic variable.



Assuming Step 1 above has been completed:

- 1, 2, 3...**
1. Decide when the data should be updated:
    - i. For the user to control the data update, add a standard **Command Button** from the **Control Toolbox**.  

    - ii. For the value to constantly update on a regular interval, add the Omron timer control.  

  2. Double click the added object to access the script and add the line:  
`Cells(1, 1) = OPCComms1.Value("GroupName", "OPCBoilerTemp")`  
where OPCBoilerTemp is the name of the item to read.
  3. Close the Visual Basic editor, and run the application as shown in Step 1. The cell A1 (that is row 1, column 1) will show the required data.  


### Step 3: Adding Third Party ActiveX Controls

Step 1 shows data in an Omron graphical control, but the data can be used by other ActiveX controls, like Graphical Control Libraries supplied by other manufacturers, or controls like Charts or Scroll Bars supplied with Microsoft products.

Assuming Step 1 above has been completed, the following steps show connecting the data to a standard Scroll Bar:

- 1, 2, 3...** 1. Add a standard **Scroll Bar** from the **Control Toolbox**.



2. Select and resize the buttons as required then drag and drop the buttons in the desired position.
3. Double-click on the scroll bar buttons. This will reposition the cursor in the code sheet at the following entry.

```
Private Sub Scrollbar1_Change()  
|  
End Sub
```

**Note:** In Visual Basic, the default name for scroll bars is **HScroll1** or **VScroll1**.



4. Add the following syntax. The additional command instructs any new Scroll Bar value to be written to the server.

```
Private Sub Scrollbar1_Change()  
    OPCComms1.Value("GroupName", "OPCBoilerTemp") =  
        Scrollbar1.Value  
End Sub
```



Run the application as shown in Step 1. The communications control will disappear and the 7 Segment display will show the current value. When you click on the scroll bar buttons the value is sent to the server. This new value is then shown on the 7 segment display. Note that the maximum value is limited to 100. This is the default value of the scroll bar buttons.

This example shows a control setting a value. Third Party controls can also display values. For this, the syntax would be (depending on actual control):

```
ControlName.Value = OPCComms1.Value("GroupName", "OPCBoilerTemp")
```

This script could also be added to a button or Timer control, as explained in Step 2. Script functions are described further in Appendix B.

### Other Features

The following sections provide a brief overview of some of the more advanced features available in CX-Server OPC.

## Event Driven Routines

Many of the script examples in this manual use asynchronous communications, that is communications are carried out on demand without synchronisation with the rest of the system. Asynchronous communications can be easily used to quickly create solutions that are easy to understand. As a solution grows however, asynchronous communications can prove inefficient and produce unpredictable updating, which is difficult to debug because multiple scripts may be demanding the same data at the same time.

The OPC Communications Control provides facilities for synchronous communications, that is communications and data updating are synchronised. The **GetData** and **StopData** script commands (see Appendix B for full details) control the generation of **OnData** events on regular intervals, which can be used to efficiently drive multiple controls, and is easier to debug.

### Example:

- 1, 2, 3... 1. Add an **OMRON CX OPC Communications Control** and two standard **Command Buttons**.
2. Double click the communications control to add the following script. Note the script is in the Event **OnData**:

```
Private Sub OPCComms1_OnData(ByVal Group As String,
ByVal Item As String, ByVal Value As Variant, ByVal
BadQuality As Boolean)
    If (Item = "OPCBoilerTemp") Then
        'Data is from this point
        Cells(1, 1) = Value
    End If
End Sub
```

Every time **OnData** is called with data from the point **OPCBoilerTemp** the value is written to the cell A1.

3. Double click the Command Buttons to add the following script:

```
Private Sub CommandButton1_Click()
    OPCComms1.GetData "MyGroup", "OPCBoilerTemp"
End Sub

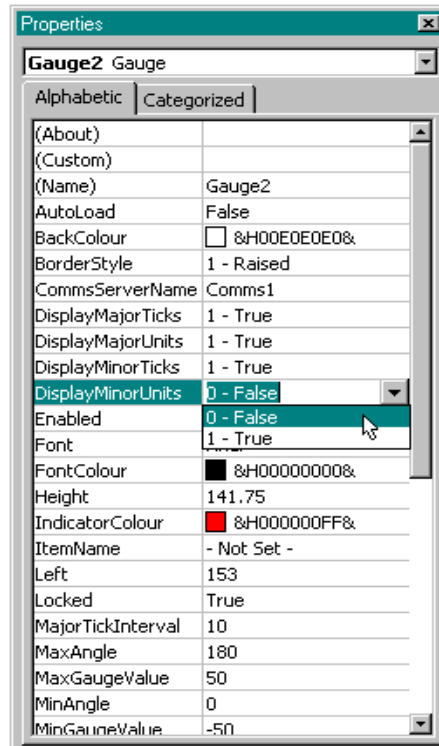
Private Sub CommandButton2_Click()
    OPCComms1.StopData "MyGroup", "OPCBoilerTemp"
End Sub
```

Run the application. Click CommandButton1 to start creating OnData events every second. Note the cell A1 updating. Click CommandButton2 to stop the updating.

## Advanced Properties

When working with Visual Basic the advanced properties dialog is normally displayed on the right of the work form, although it can be docked in any position. In Excel it is opened by right clicking on an object and selecting the Properties option from the pop up menu. The dialog allows you to scan through all the available options. Some options require you to enter specific information, others provide a choice of entries from a drop down menu.

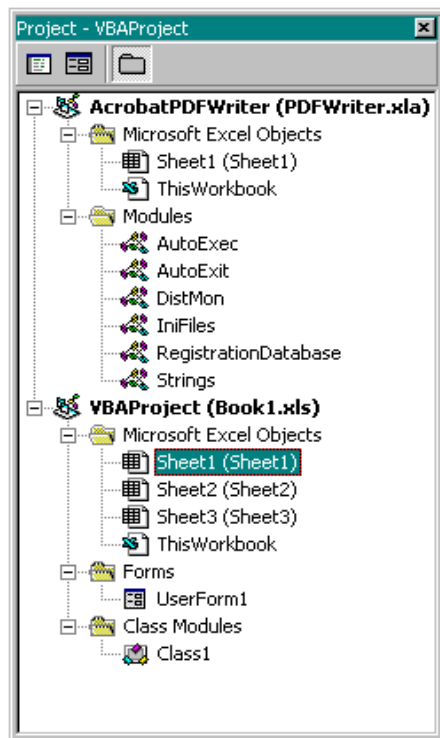
From the drop down menu at the top of the dialog select the object to be edited. This will display the full range of options available for that object, which can then be viewed either Alphabetically or Categorized. A full list of the options and their settings and ranges for the CX-Server OPC objects can be found in Appendix A – Component Properties.



## Project Tree

Like Explorer the Project Tree provides a graphical representation of your application. In Visual Basic it is displayed to the right of the work form while in Excel it is shown on the left of the code sheet.

By expanding the tree you can see all your associated files and work sheets. It is possible to open any number of work sheets by simply double-clicking on them. Having multiple work sheets open in this way enables you to copy and paste between them saving you valuable time rewriting sections of code that already exist, and more importantly are known to work.



## Controlling ActiveX Objects

A number of objects can be grouped together such as the 7 segment display and the spin buttons by selecting the objects you want to group while holding down the 'Shift' key as you select each object. When you have selected all the objects, right click on an object and select the 'Group' option from the drop down menu. Note however that objects must be ungrouped before their parameters can be edited.

Other drawing commands such as Bring to Front, Send to Back, Cut, Copy, Past etc. follow the standard windows conventions and are selected from the toolbar and/or drop down menus.

## Appendix A Component Properties

This appendix gives a list of the available properties. Each component supports a selection of these properties which can be set in design mode by using the properties dialog, or in the run time by using a Visual Basic script command – for example: - `Object1.Value = 10`

Property Title	Example Values	Description
About	None	Description of the object.
(Custom)	None	Opens the properties dialog for the object.
(Name)	Object Name	This is the system generated name for the object.
Autoload	True False	Switches the Autoload function On or Off. When set to On the ActiveX component value will autoload. True = On, False = Off.
AutoSize	0 to 1	Switches the fonts auto size option on or off. 0 = Off, 1 = On.
BackColor	■ &H00E0E0E0&	The code determines the background colour of the object. Click the browse button to display the colour palette.
BorderStyle	0 to 3	The value determines the visual appearance of the border that surrounds the object. 0 = None, 1 = Raised, 2 = Sunken, 3 = Single_Line
ButtonStyle	0 to 6	The value determines the button style. 0 = Toggle Switch, 1 = Colour Button, 2 = In/Out Button, 3 = Rotary Switch 4 = Rocker Switch, 5 = Indicator Button, 6 = Blank Button.
CommsServerName	Comms1 to n	This is the name of associated communications control.
DecimalPlaces	2	Number of decimal places for 7 Segment. Only applies when NumberBase = 10
DisplayFont	Arial	This is the system name of the font used for the display. Use the browse button to display the font dialog. Arial is the default.
DisplayFontColour	■ &H00000000&	The code determines the colour of the display font. Click the browse button to display the colour palette.
DisplayFormat	0 – Dec 1 – Hex 2 – Scientific	Determines the format used to display the analogue display information. 0 = Decimal, 1 = Hexadecimal, 2 = Scientific.
DisplayMajorTicks	False True	Shows or hides the major tick marks of the scale. True = Show, - False = Hide.
DisplayMajorUnits	False True	Shows or hides the major units markers of the scale. True = Show, False = Hide.
DisplayMinorTicks	False True	Shows or hides the minor tick marks of the scale. True = Show, False = Hide.
DisplayMinorUnits	False True	Shows or hides the minor units markers of the scale. True = Show, False = Hide.
DisplayType	0 – Analogue 1 – Digital 2 – Text	Determines the type of display. 0 – Analogue: as a numeric value, 1 – Digital: as textual value, 2 – Text: as text.
Enabled	True False	Switches the object on or off. True = On, False = Off.
Font	Arial	This is the system name of the font used for the object title. Use the browse button to display the font dialog. Arial is the default.
FontColour	■ &H00000000&	The code determines the colour of the title font. Click the browse button to display the colour palette.
Height	141	Sets the overall height of the object in pixels.

Property Title	Example Values	Description
IndicatorColour	■ &H00FF0000&	The code determines the colour of the indicator. Click the browse button to display the colour palette.
ItemName	Output Flow No1	This is the reference name given to the object.
KnobBorderPercentage	25	This value determines the size of the knob border as a percentage of the overall size.
KnobColour	■ &H02C4723E&	The code determines the colour of the knob. Click the browse button to display the colour palette.
KnobStyle	0 – Integer 1 – Real	Determines how the numerical value of the knob is interpreted 0 = as an integer or 1 = as a real number.
LeadingZeros	False True	Turns On or Off the leading zero's of the display. False = On, True = Off.
LEDColour	■ &H00FF0000&	The code determines the default or inactivated colour of the LED indicator. Click the browse button to display the colour palette.
Left	153	Determines the position of the object from the left hand edge of the work area in pixels.
Locked	True False	Locks the actions of the ActiveX object. True = Locked, False = Unlocked.
MajorTickInterval	10	Sets the number of major tick intervals.
MaxAngle	180	Determines the length of the arc for rotary gauges. Range $\pm 360^\circ$ .
MaxCharacters	6	Determines the number of digits to be included in the display.
MaxDecimalPlaces	2	Determines the position of the decimal point in the display.
MaxGaugeValue	50	Sets the maximum value of the gauge.
MaxValue	999.99	Sets the maximum value that can be shown by a display.
MinAngle	0	Determines the length of the arc for rotary gauges. Range $\pm 360^\circ$ .
MinGaugeAngle	50	Sets the minimum angle of the gauge.
MinGaugeValue	10	Sets the minimum value displayed on the gauge.
MinorTickInterval	2	Sets the number of tick intervals between each major tick interval.
MinValue	-999.99	Sets the minimum value that can be shown by a display.
NumberBase	10	Number Base for 7 Segment e.g. 2 for Binary, 10 for Decimal, 16 for Hexadecimal
NumberOfDigits	3	Determines the number of digits to be included in the display.
Orientation	0 or 1	Sets the orientation of the gauge – Horizontal or Vertical. 0 = Vertical, 1 = Horizontal.
PrintObject	True False	Determines if this ActiveX object will be shown on a printout of the work sheet. True = Printed, False = Not printed.
Round	0 or 1	Determines the shape of the LED indicator. 0 = Square, 1 = Round.
ScaleFont	Arial	This is the system name of the font used for the scale. Use the browse button to display the font dialog. Arial is the default.
ScaleFontColour	■ &H00000040&	The code determines the colour of the scale font. Click the browse button to display the colour palette.
SegmentColour	■ &H0000C000&	The code determines the colour of the display segments. Click the browse button to display the colour palette.
Shadow	True False	Adds or removes a shadow from the object giving it a raised appearance. True = Shadow On, False = Shadow Off.
State0Colour	■ &H000000FF&	The code determines the colour of the toggle switch in the 0 state. Click the browse button to display the colour palette.
State0Text	Text	This is the text indicating the 0 state of the switch, i.e. Off, Stopped, Halt etc.
State1Colour	■ &H0000FF00&	The code determines the colour of the toggle switch in the 1 state. Click the browse button to display the colour palette.



Property Title	Example Values	Description
State1Text	Text	This is the text indicating the 1 state of the switch, i.e. On, Running, Start etc.
StateFont	Arial	This is the system name of the font used to display the state of the switch on button. Use the browse button to display the font dialog. Arial is the default.
StateFontColour	■ &H00000000&	The code determines the colour of the title font. Click the browse button to display the colour palette.
Title	Text	This is the title that appears in the object.
TitlePosition	0 – Top 1 – Bottom	Determines where title will be placed in the object. Above or below the scale.
Top	230	Determines the position of the object from the top of the work area in pixels.
UnitPosition	0 – Inside 1 – Outside	Positions the dial units inside or outside the scale.
UpdateRate	10	The value sets the frequency, in seconds, at which the data passing to or from the object is updated.
Value	0	Determines the default value of the ActiveX object.
Visible	True False	Switches the object between visible and invisible in run mode. True = Visible, False = Invisible.
Width	98.25	Determines the overall width of the object in pixels.

## Appendix B

### Script Interface

The Script Interface defines the Visual Basic script interface for the OPC communications control.

#### Functions

<b>Value</b>	Function for getting and setting an OPC item value.
<b>Read</b>	Function to read the value of an OPC item.
<b>Write</b>	Function to write the value of an OPC item.
<b>GetData</b>	Function for starting OnData events.
<b>StopData</b>	Function for stopping OnData events.
<b>OnData</b>	Event for receiving notification of a change in data.

#### Value

Reads or writes the value of an OPC item.

Example 1 – Reading a value:

```
intVal = OPCComms1.Value("MyGroup", "BoilerTemp")
```

In this example, the OPC item 'BoilerTemp' in the OPC group called "MyGroup" will be read from the OPC Server and will be stored in 'intVal'.

Example 2 – Writing a value:

```
OPCComms1.Value("MyGroup", "BoilerTemp") = 50
```

In this example, the value 50 will be written to the OPC item 'BoilerTemp'.

Note: 'Value' is the default property for all objects, so is assumed if omitted. Therefore, the following examples are the same:

```
intVal = OPCComms1.Value("MyGroup", "BoilerTemp")  
and  
intVal = OPCComms1("MyGroup", "BoilerTemp")
```

#### Read

Reads the value of an OPC item.

Example of synchronous read:

```
intVal = OPCComms1.Read("MyGroup", "BoilerTemp", WaitUntilComplete)
```

In this example, the OPC item 'BoilerTemp' in the OPC group called "MyGroup" will be read from the OPC Server and will be stored in 'intVal'. The script will wait for the read operation to

complete before continuing to execute the next line. This is identical to the operation of the 'Value' method.

Example of asynchronous read:

```
OPCComms1.Read "MyGroup", "BoilerTemp", NoWaiting
```

In this example, the OPC item 'BoilerTemp' in the OPC group called "MyGroup" will be read from the OPC Server. The script will continue to execute the next line immediately, and when the data is read, it generates an OnData event.

## Write

Writes the value of an OPC item.

Example of synchronous write:

```
OPCComms1.Write "MyGroup", "BoilerTemp", NewValue, WaitUntilComplete
```

In this example, 'NewValue' will be written to the OPC item 'BoilerTemp' in the OPC group called "MyGroup". The script will wait for the write operation to complete before continuing to execute the next line. This is identical to the operation of the 'Value' method.

Example of asynchronous write:

```
OPCComms1.Write "MyGroup", "BoilerTemp", NewValue, NoWaiting
```

In this example, 'NewValue' will be written to the OPC item 'BoilerTemp' in the OPC group called "MyGroup". The script will continue to execute the next line immediately.

## GetData

Starts asynchronous data reading of the specified OPC item at the group update rate

Example

```
OPCComms1.GetData "MyGroup", "MyItem"
```

In this example, MyItem in MyGroup would be read at the group update rate. Data is then sent to the OnData routine.

## StopData

Stops asynchronous data reading of the specified OPC item

Example

```
OPCComms1.StopData "MyGroup", "MyItem"
```

In this example, the asynchronous reading of MyItem in MyGroup would be stopped.

## OnData

This event is sent back to the container (e.g. Excel) when data has changed. This is either data started by calling GetData, or by calling Read or Write in asynchronous mode.

Example

```
Private Sub OPCComms1_OnData(ByVal Group As String, ByVal  
    Item As String, ByVal Value As Variant,  
    ByVal BadQuality as Boolean)  
    TextBox1 = Item  
    Segment1 = Value  
End Sub
```

In this example, the CX-Server 7 Segment component is set to the value of the point and a text box is set to display the name of the item.

If BadQuality is set to True then the value may be inaccurate e.g. from a device which has been disconnected.

The OnData routine can be enhanced to include logical expressions on the incoming Item name and then update the correct graphical object etc. for example:

```
Private Sub OPCComms1_OnData(ByVal Group As String,  
    ByVal Item As String, ByVal Value As  
    Variant, ByVal BadQuality as Boolean)  
    If Item = "MyItem" then  
        Segment1 = Value  
    Else if Item = "MyOtherItem" then  
        Cells(1,1) = Value  
    End if  
End Sub
```

## Glossary of Terms

<b>ActiveX</b>	A component technology developed by Microsoft allowing components to communicate with <b>applications</b> .
<b>Application</b>	A software program that accomplishes a specific task. Examples of applications are <b>SYSMAC-SCS</b> , <b>SYSMAC-CDM</b> , <b>Microsoft Word</b> and <b>Microsoft Excel</b>
<b>Bitmap</b>	The representation of an image stored in a computer's memory. Each picture element ( <b>pixel</b> ) is represented by bits stored in the memory.
<b>Communications Driver</b>	The relevant communications management system for OMRON PLCs in conjunction with <b>Microsoft Windows</b> , providing facilities for other SYSMAC software to maintain PLC device and address information and to communicate with OMRON PLCs and their supported network types.
<b>GUI</b>	Graphical User Interface. Part of a program that interacts with the user and takes full advantage of the graphics displays of computers. A GUI employs pull-down menus and dialog boxes for ease of use.
<b>I/O type</b>	Input / Output type. An attribute of a <b>point</b> that defines the origin and destination of the data for that <b>point</b> . The data for a <b>point</b> can originate (be <i>input</i> from) and is destined (is <i>output</i> to) to the internal computer memory, a <b>PLC</b> or a target application
<b>Icon</b>	Pictorial representations of computer resources and functions
<b>Microsoft Excel</b>	A spread sheet <b>application</b> .
<b>Microsoft Windows</b>	A windowing environment for MS-DOS computers, that is noted for its <b>GUI</b> , and for features such as multiple typefaces, desk accessories (such as a clock, calculator, calendar and notepad), and the capability of moving text and graphics from one <b>application</b> to another via a clipboard. <b>CX-Server OPC</b> will run only under Microsoft Windows.
<b>Microsoft Word</b>	A word processing <b>application</b> .
<b>OLE</b>	Object Linking and Embedding. Used to transfer and share information between <b>Microsoft Windows</b> based <b>applications</b> and accessories.
<b>OPC</b>	Abbreviation for <b>OLE</b> for Process Control. Open standard for the exchange of data between <b>OPC Servers</b> and <b>OPC Clients</b> used within the process control industry.
<b>OPC Client</b>	A software <b>application</b> which uses an <b>OPC</b> interface to exchange data with an <b>OPC Server</b> .
<b>OPC Group</b>	A collection of <b>OPC Items</b> .
<b>OPC Item</b>	A single piece of data e.g. a <b>PLC</b> memory area stored with an <b>OPC Server</b> .

---

<b>OPC Server</b>	A software <b>application</b> which uses an <b>OPC</b> interface to provide data to <b>OPC Clients</b> .
<b>PC</b>	Abbreviation for Personal Computer.
<b>Pixel</b>	A single displayable point on the screen from which a displayed image is constructed. The screen resolution of the computer's Visual Display Unit (VDU) is defined by the number of pixels across and the number of pixels down (e.g. 1024 x 768).
<b>PLC</b>	Abbreviation for Programmable Logic Controller.
<b>Point</b>	A point is used to hold a value of a predefined type - Boolean, Integer, Text, etc. The contents of a point may be controlled by an object or I/O mechanism such as <b>DDE</b> . The contents of a point may control the action or appearance of an object, or be used for output via an I/O mechanism.
<b>SVGA mode</b>	A mode of video display that provides 800 × 600 <b>pixel</b> resolution (or higher) with 16 or more colours and is supported on Super Video Graphics Adapter systems.
<b>Windows Desktop</b>	An integral part of <b>Microsoft Windows</b> which allows <b>Microsoft Windows</b> based <b>applications</b> to be started from <b>icons</b> and for all <b>applications</b> to be organised.

---

## Index

---

### A

About CX-Server OPC · 9  
About this Manual · 6  
ActiveX Objects  
    7 Segment · 14  
    Display · 14  
    LED Indicator · 14  
    Linear Gauge · 14  
    OPC Communications · 14  
    Rotary Knob · 15  
    Rotational Gauge · 14  
    Timer · 15  
    Toggle · 15  
Adding a 7 Segment Display · 17  
Adding the Communication Control · 15  
Adding Third Party ActiveX Controls · 19  
Advanced Properties · 21

---

### C

Component Properties · 23  
Configuring server for remote connection · 12  
Connecting to an OPC Server · 16  
Controlling ActiveX Objects · 22

---

### E

Event Driven Routines · 20

---

### G

Getting Started with CX-Server OPC · 6  
Glossary of Terms · 29

---

### H

Hardware Requirements · 7  
    Operating Systems · 7  
Help Topics · 9

---

### I

Inserting Data in Cells · 18  
Installing/Uninstalling CX-Server OPC · 8

---

### O

Objects Overview · 14  
OPC  
    Foundation web site · 10  
    What is it? · 10  
OPC Server  
    Configuring for remote connection · 12  
    Starting · 10  
    Using Third Party OPC Clients · 11  
Operating Systems · 7  
Other Features · 19  
    Advanced Properties · 21  
    Controlling ActiveX Objects · 22  
    Event Driven Routines · 20  
    The Project Tree · 22

---

### P

Project Tree · 22

---

### R

Running an Application · 18

---

### S

Script Interface · 26  
    Functions · 26  
Script Interface Functions  
    GetData · 27  
    OnData · 28  
    StopData · 27  
Starting CX OPC Server · 10  
System Requirements · 7  
    Hardware Requirements · 7

---

---

**T**

Technical Support · 9  
The Help System, and How to access it · 8  
Tutorial Step 1 Viewing Data using Omron  
Graphical Control · 15  
Tutorial Step 2 Inserting Data in Cells · 18  
Tutorial Step 3 Adding Third Party ActiveX  
Controls · 19

---

**U**

Using the OPC Client components · 14  
Using the OPC Server · 10  
Using Third Party OPC Clients · 11

---

**V**

Viewing Data using Omron Graphical Control · 15

---

**W**

What is OPC? · 10