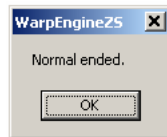


UPDATING THE ZG TO FIRMWARE V1.5:

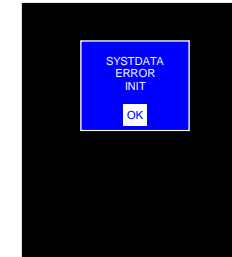
- 1) Unzip the firmware file ZG_WDC_v1500.zip
- 2) Run the WarpEngineZero from the desktop or the Omron directory. (If the language of the WarpEngine is set to Japanese, you can change to English by editing the WarpEngine.ini file):

```
1 [OTHER]
2 Language=English
3 TypeDiffAccept=1
4 Verify=0
5 [DISCOM]
6 ComPort=2
7 Settings=57600,N,8,1
8 [FOLDER]
9 JoinFile=D:\Eigene Dateien\Literatur\AOS Manuals\Sensors\ZG\New Version 1.5\ZG_WDC_v1500.Bin
10
```

- 3) Eventually you have to select the com port manually if the WarpEngine does not find the sensor automatically (after pressing the button “cancel”).
- 4) Load the unzipped firmware file by pressing the “Loading file” button.
- 5) Press the “Start upgrade” button. Be sure that the power supply is fixed securely, if the power is removed while the upgrade process is running the sensor will be damaged and can not be recovered. Be patient, the upgrade process will take some minutes.
- 6) Upgrading is finished after the WarpEngine shows this window:



- 7) The sensor shows this error message after upgrading:



Confirm this error message by pressing e.g. the orange “MENU” button on the controller. The ZG-WDC controller will then reboot.

- 8) The new firmware requires also the SmartMonitorZG to be upgraded to Version 1.5. Unfortunately this version can not be used with older ZG firmware versions than V1.5. If you want to use the SmartMonitorZG with older firmware versions, you must first uninstall V1.5 before reinstalling V1.2 using the windows XP software uninstall function in the control panel.
- 9) The format of the sensor settings data is changed from previous versions, you can use the data converter tool to migrate older settings files to the new V1.5 format.